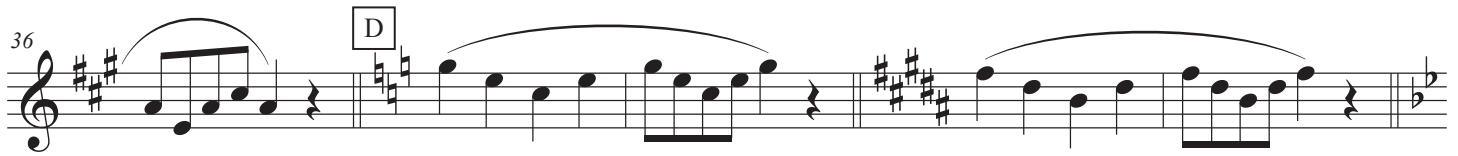
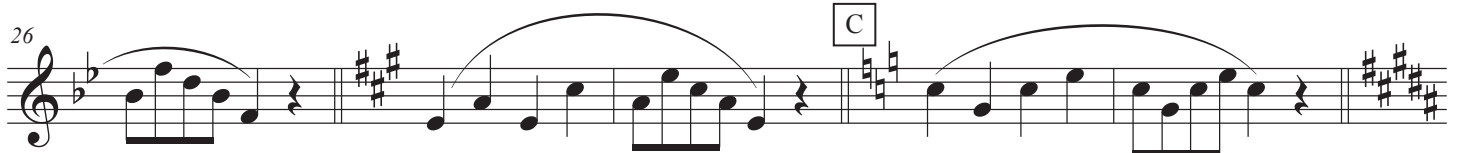


# Knight Pride Warm Ups 2020

## Scale Long Tones



### A Flex and Flow



A Fingers and Flex

Musical staff for section A, measures 1-49. The staff contains a sequence of eighth and sixteenth notes, mostly beamed together, with some dotted rhythms. The key signature has three sharps (F#, C#, G#). The piece ends with a double bar line and a key signature change to two sharps (F#, C#).

50

Musical staff for section A, measures 50-59. The staff continues the sequence of eighth and sixteenth notes. The key signature changes to one sharp (F#) at the beginning of this staff. The piece ends with a double bar line and a key signature change to one flat (Bb).

B

Musical staff for section B, measures 60-59. The staff contains a sequence of eighth and sixteenth notes. The key signature has one flat (Bb). The piece ends with a double bar line and a key signature change to two sharps (F#, C#).

60

Musical staff for section B, measures 60-59. The staff continues the sequence of eighth and sixteenth notes. The key signature has two sharps (F#, C#). The piece ends with a double bar line and a key signature change to one sharp (F#).

C

Musical staff for section C, measures 60-69. The staff contains a sequence of eighth and sixteenth notes. The key signature has one sharp (F#). The piece ends with a double bar line and a key signature change to one flat (Bb).

70

Musical staff for section C, measures 70-73. The staff continues the sequence of eighth and sixteenth notes. The key signature has one sharp (F#). The piece ends with a double bar line and a key signature change to one flat (Bb).

74

Musical staff for section C, measures 74-77. The staff continues the sequence of eighth and sixteenth notes. The key signature has one flat (Bb). The piece ends with a double bar line and a key signature change to two sharps (F#, C#).

78

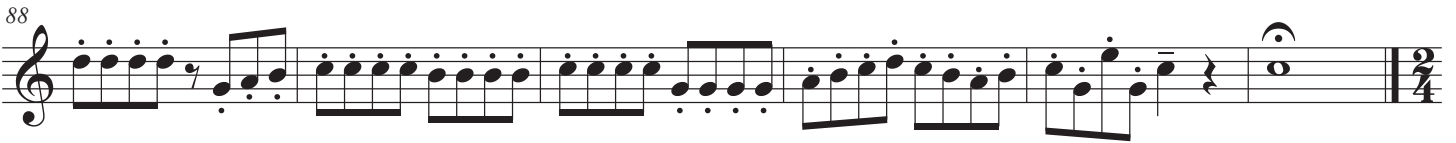
Musical staff for section C, measures 78-82. The staff continues the sequence of eighth and sixteenth notes. The key signature has two sharps (F#, C#). The piece ends with a double bar line and a key signature change to one sharp (F#).

D

83

Musical staff for section D, measures 83-87. The staff contains a sequence of eighth and sixteenth notes. The key signature has one sharp (F#). The piece ends with a double bar line and a key signature change to one flat (Bb).

88



A musical staff starting at measure 88 in 2/4 time. It contains a sequence of eighth notes with various articulations, including slurs and accents, leading to a final whole note chord.

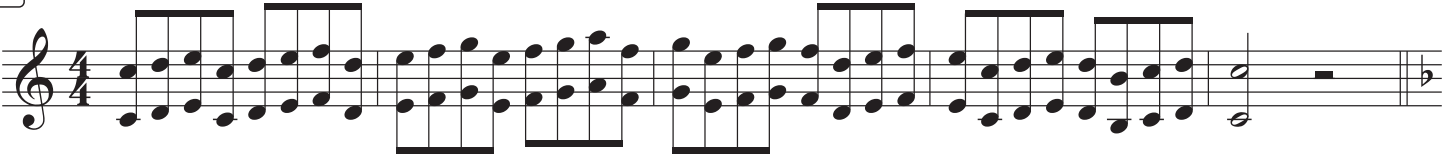
- ①
- ②
- ③
- ④
- ⑤
- ⑥
- ⑦

Articulation Patterns



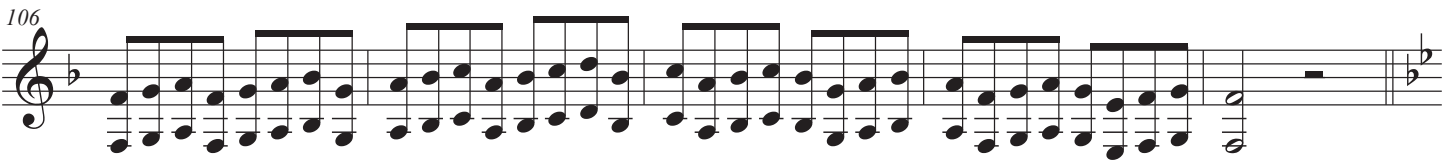
A musical staff titled 'Articulation Patterns' in 2/4 time. It shows seven distinct patterns of eighth notes, each with a circled number above it corresponding to the list above. The patterns include slurs, accents, and other articulation marks.

**A** Show Key Centers



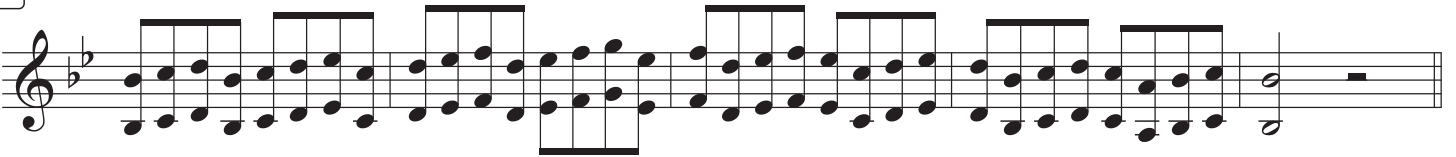
A musical staff in 4/4 time for section A. It features a sequence of eighth notes in a major key, with a key signature change to one flat at the end of the staff.

106



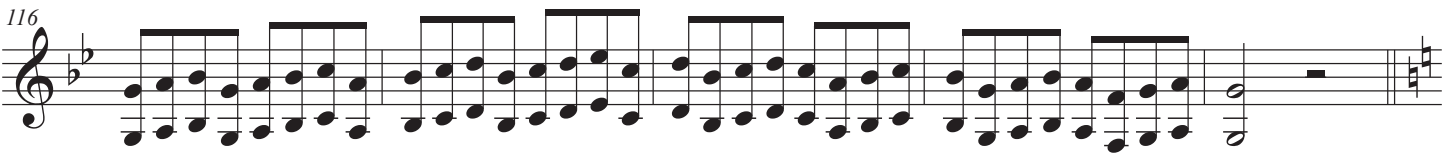
A musical staff in 4/4 time for section B. It features a sequence of eighth notes in a minor key, with a key signature change to two flats at the end of the staff.

**B**



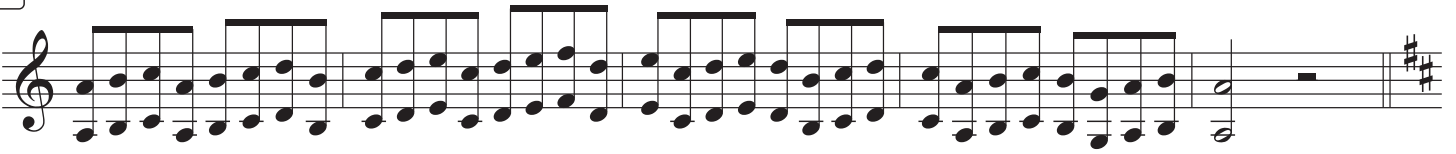
A musical staff in 4/4 time for section B. It features a sequence of eighth notes in a minor key, with a key signature change to two flats at the end of the staff.

116



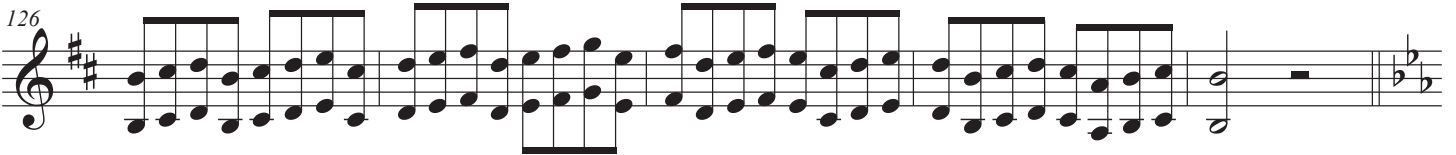
A musical staff in 4/4 time for section C. It features a sequence of eighth notes in a minor key, with a key signature change to two flats and a sharp at the end of the staff.

**C**



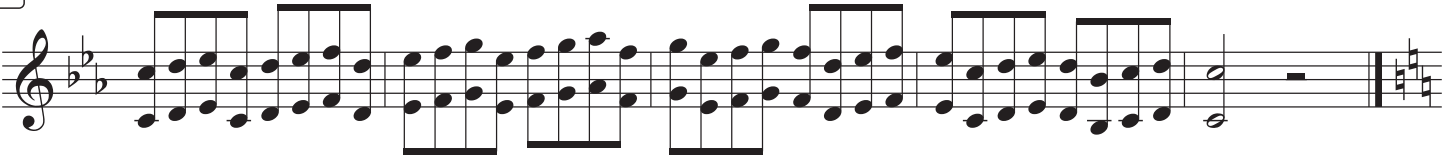
A musical staff in 4/4 time for section C. It features a sequence of eighth notes in a minor key, with a key signature change to two flats and a sharp at the end of the staff.

126



A musical staff in 4/4 time for section D. It features a sequence of eighth notes in a major key, with a key signature change to one flat and a sharp at the end of the staff.

**D**



A musical staff in 4/4 time for section D. It features a sequence of eighth notes in a minor key, with a key signature change to two flats and a sharp at the end of the staff.

Tuning Sequences

136 Hum Sing Play Cluster Chord Play

141 Ballad Excerpt

*mp*

144

*mf* *f*

150

*ff* *p* *mp* *p*