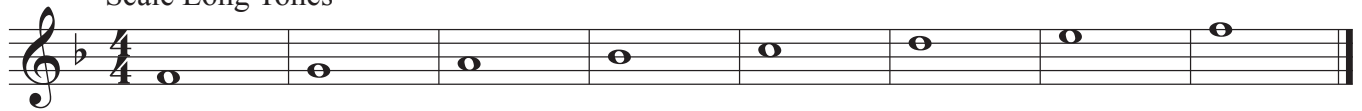
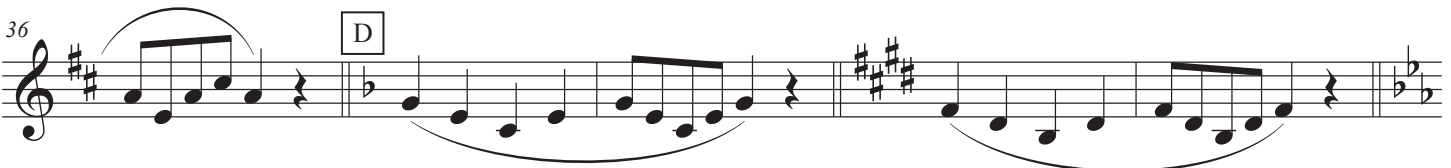
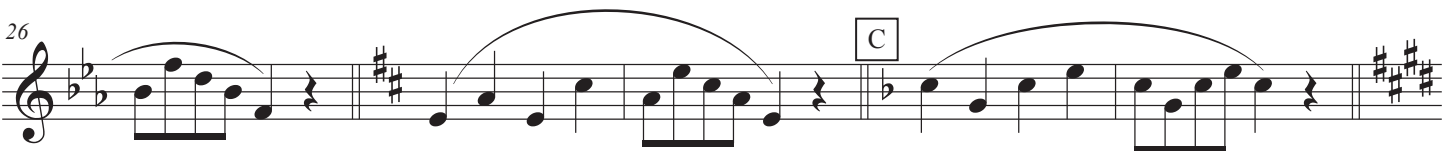
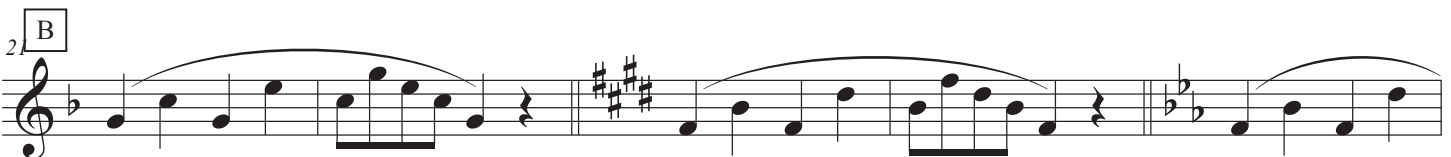
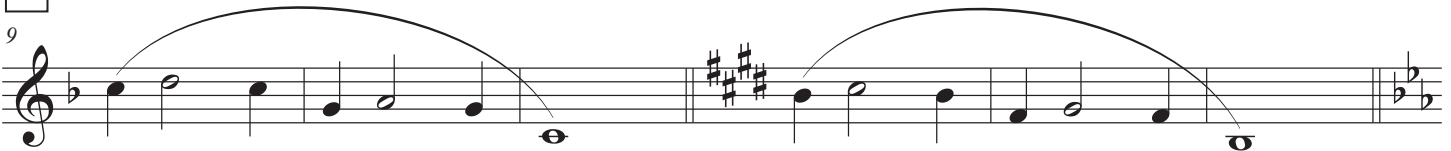


# Knight Pride Warm Ups 2020

## Scale Long Tones



### A Flex and Flow



A Fingers and Flex

50

B

60

C

71

75

D

80

85

89

Musical staff for measure 89, starting with a treble clef, a key signature of one flat (B-flat), and a 2/4 time signature. The staff contains a sequence of eighth notes and quarter notes, ending with a quarter rest followed by a whole note G4.

- ①
- ②
- ③
- ④
- ⑤
- ⑥
- ⑦

Articulation Patterns

Musical staff titled "Articulation Patterns" showing seven measures of eighth-note patterns. The first six measures are in 2/4 time, and the seventh is in 4/4 time. Each measure contains a sequence of eighth notes with various articulation marks like slurs and accents.

**A** Show Key Centers

Musical staff for section A, starting with a treble clef, a key signature of one flat (B-flat), and a 4/4 time signature. It contains a sequence of eighth-note patterns across five measures, ending with a whole note G4.

106

Musical staff for measure 106, starting with a treble clef, a key signature of two flats (B-flat and E-flat), and a 4/4 time signature. It contains a sequence of eighth-note patterns across five measures, ending with a whole note G4.

**B**

Musical staff for section B, starting with a treble clef, a key signature of two flats (B-flat and E-flat), and a 4/4 time signature. It contains a sequence of eighth-note patterns across five measures, ending with a whole note G4.

116

Musical staff for measure 116, starting with a treble clef, a key signature of two flats (B-flat and E-flat), and a 4/4 time signature. It contains a sequence of eighth-note patterns across five measures, ending with a whole note G4.

**C**

Musical staff for section C, starting with a treble clef, a key signature of one flat (B-flat), and a 4/4 time signature. It contains a sequence of eighth-note patterns across five measures, ending with a whole note G4.

126

Musical staff for measure 126, starting with a treble clef, a key signature of one sharp (F#), and a 4/4 time signature. It contains a sequence of eighth-note patterns across five measures, ending with a whole note G4.

**D**

Musical staff for section D, starting with a treble clef, a key signature of two flats (B-flat and E-flat), and a 4/4 time signature. It contains a sequence of eighth-note patterns across five measures, ending with a whole note G4.

Tuning Sequences

136 Hum Sing Play Cluster Chord Play

141 Ballad Excerpt

144

149