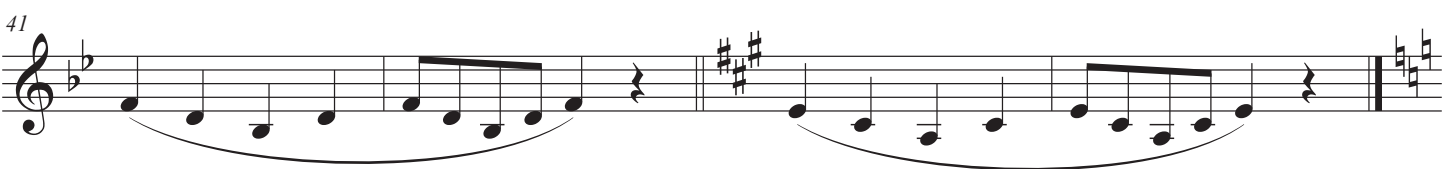


Knight Pride Warm Ups 2020

Scale Long Tones



A Flex and Flow



A Fingers and Flex

Musical staff for section A, measures 1-49. The staff is in treble clef with a key signature of one sharp (F#). It contains a sequence of eighth and sixteenth notes, mostly beamed together, with some slurs and accents. The piece ends with a double bar line and a key signature change to two sharps (F# and C#).

50

Musical staff for section A, measures 50-59. The staff is in treble clef with a key signature of two sharps (F# and C#). It continues the melodic pattern from the previous staff, ending with a double bar line and a key signature change to one flat (Bb).

B

Musical staff for section B, measures 60-59. The staff is in treble clef with a key signature of one flat (Bb). It contains a sequence of eighth and sixteenth notes, similar to section A, ending with a double bar line and a key signature change to two sharps (F# and C#).

60

Musical staff for section B, measures 60-59. The staff is in treble clef with a key signature of two sharps (F# and C#). It continues the melodic pattern from the previous staff, ending with a double bar line and a key signature change to one flat (Bb).

C

Musical staff for section C, measures 60-70. The staff is in treble clef with a key signature of one flat (Bb). It contains a sequence of eighth and sixteenth notes, mostly beamed together, with some slurs and accents. The piece ends with a double bar line and a key signature change to two sharps (F# and C#).

71

Musical staff for section C, measures 71-74. The staff is in treble clef with a key signature of two sharps (F# and C#). It continues the melodic pattern from the previous staff, ending with a double bar line and a key signature change to one flat (Bb).

75

Musical staff for section C, measures 75-78. The staff is in treble clef with a key signature of one flat (Bb). It continues the melodic pattern from the previous staff, ending with a double bar line and a key signature change to two sharps (F# and C#).

79

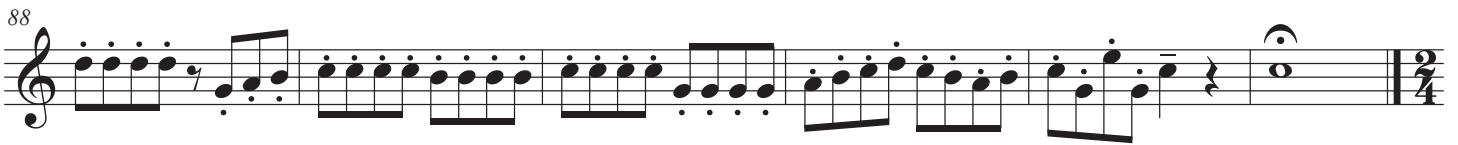
Musical staff for section C, measures 79-82. The staff is in treble clef with a key signature of two sharps (F# and C#). It continues the melodic pattern from the previous staff, ending with a double bar line and a key signature change to one flat (Bb).

D

83

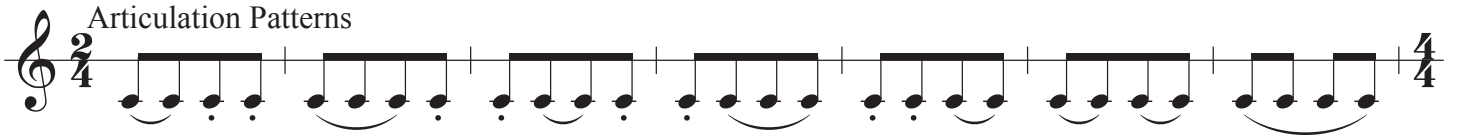
Musical staff for section D, measures 83-88. The staff is in treble clef with a key signature of one flat (Bb). It contains a sequence of eighth and sixteenth notes, mostly beamed together, with some slurs and accents. The piece ends with a double bar line and a key signature change to two sharps (F# and C#).

88

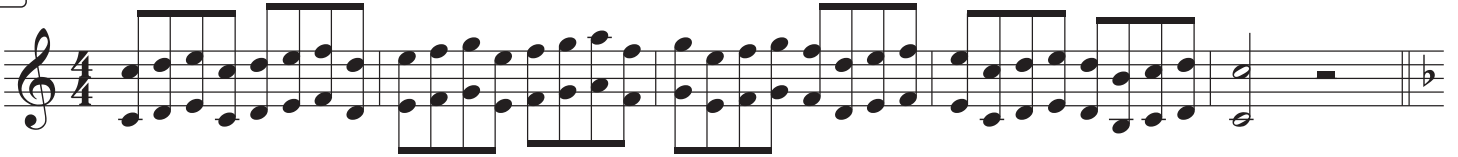


- ①
- ②
- ③
- ④
- ⑤
- ⑥
- ⑦

Articulation Patterns



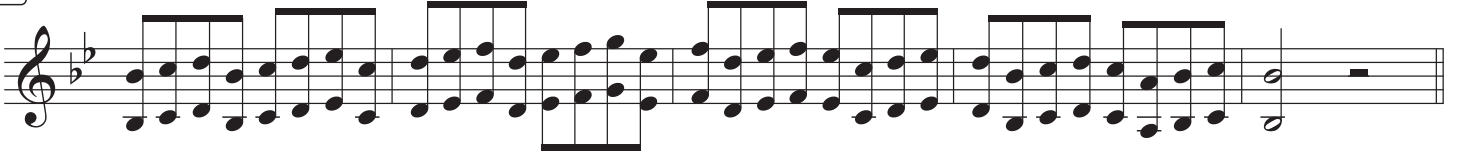
A Show Key Centers



106



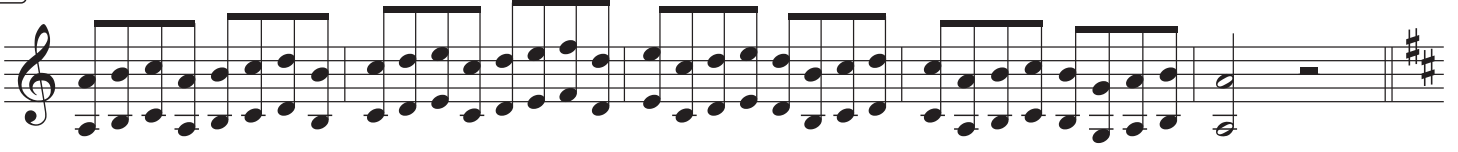
B



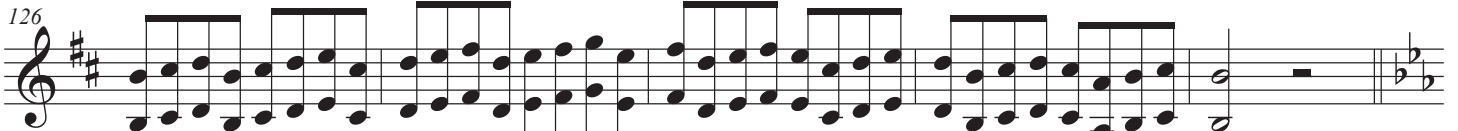
116



C



126



D

